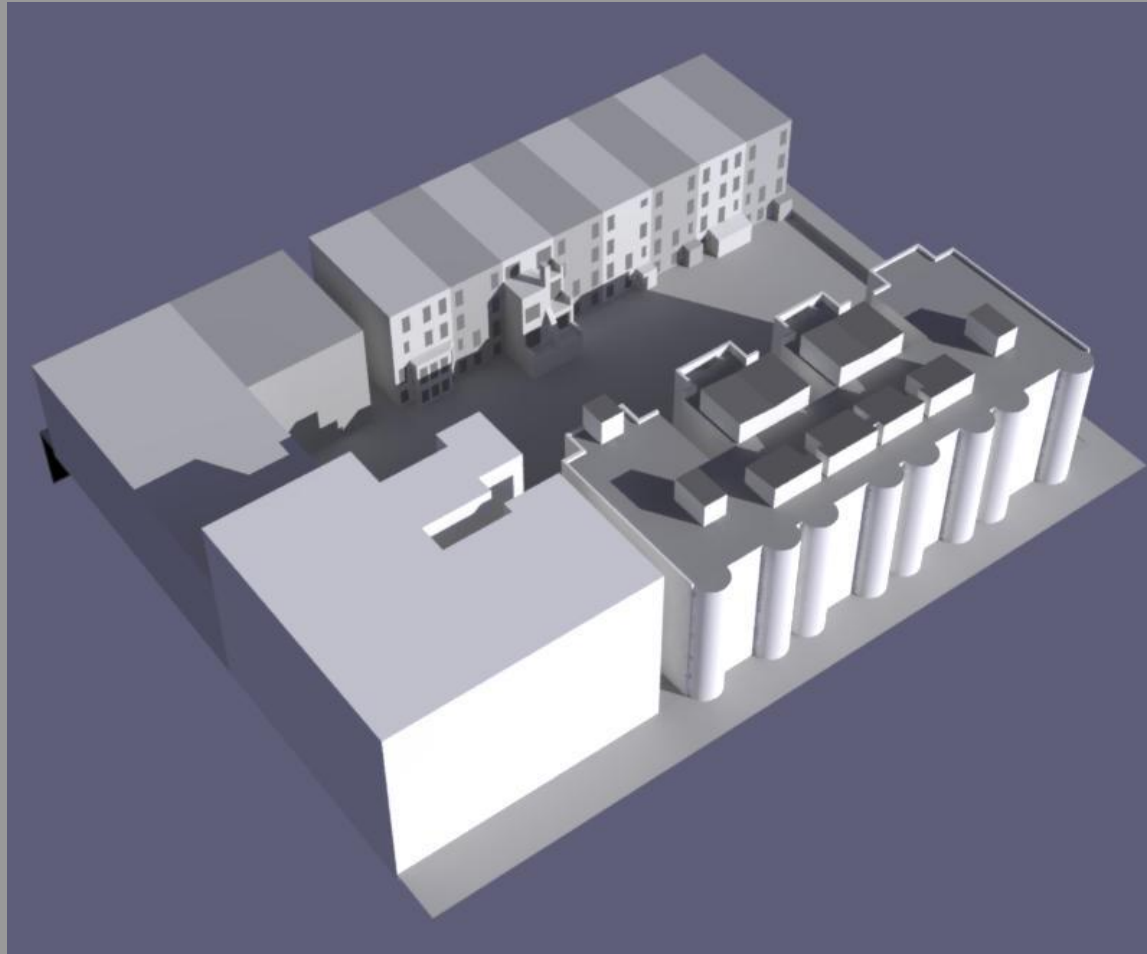
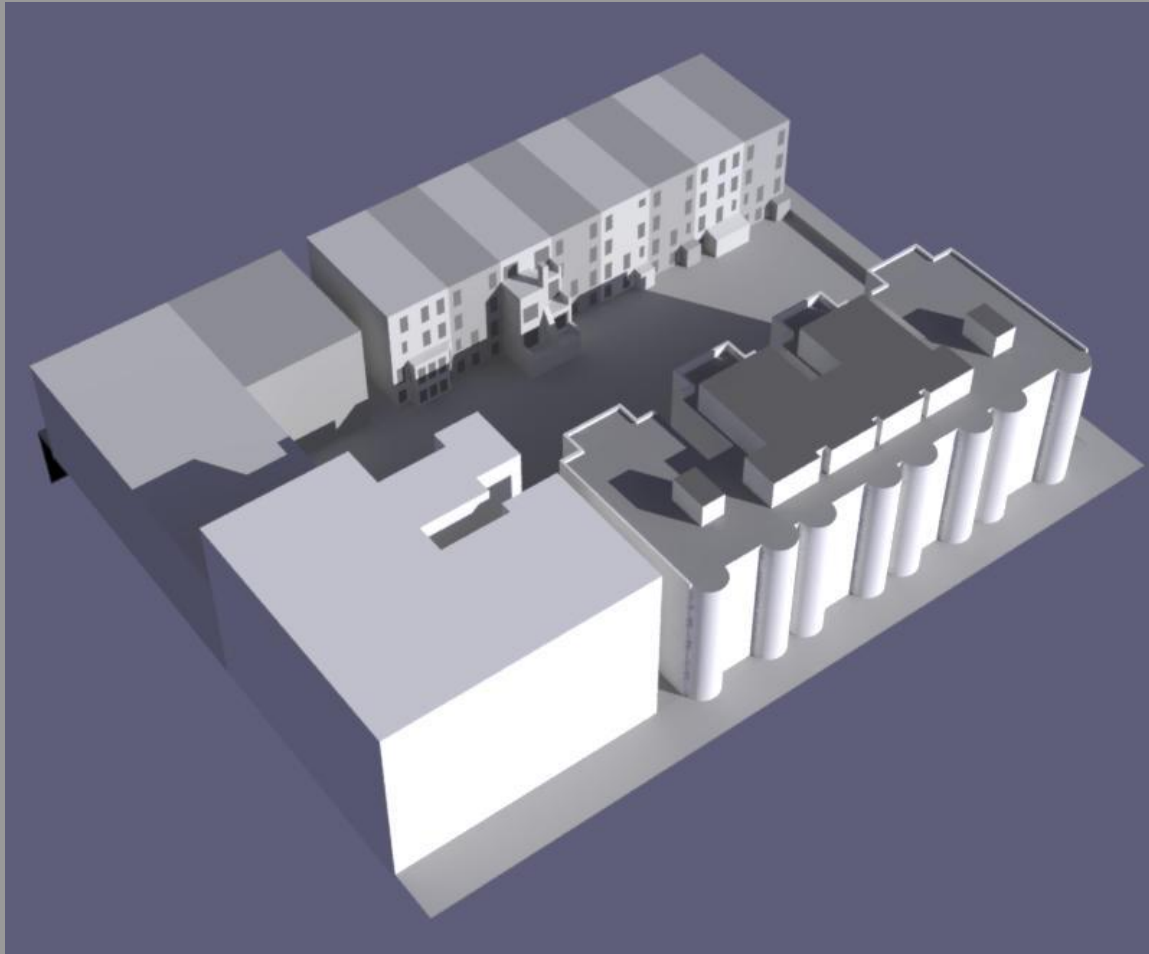

Summary

- building owner must prepare a “sun/shadow” study
- as-built vs. proposed renovation conditions on an annual basis
- direct day light vs. shadow on principle exterior facades
- qualitative results must be presented in accessible manner

Existing Condition: Noon – 12/21



New Condition: Noon – 12/21



Intermediate Observations

- differences are subtle and hard to determine on visual inspection
- difficult to present images on a per building basis for annual data
- differences must be called out to make them explicit
- quantitative results are difficult to make sense of alone

Solution

- a histogram graph that incorporates data into a visual display
- one summary page per neighbor building showing differences
- keyed to image data for typical conditions