



Hagia Sophia

Lars Grobe, Oliver Hauck, Andreas Noback, Bernd Zeimetz



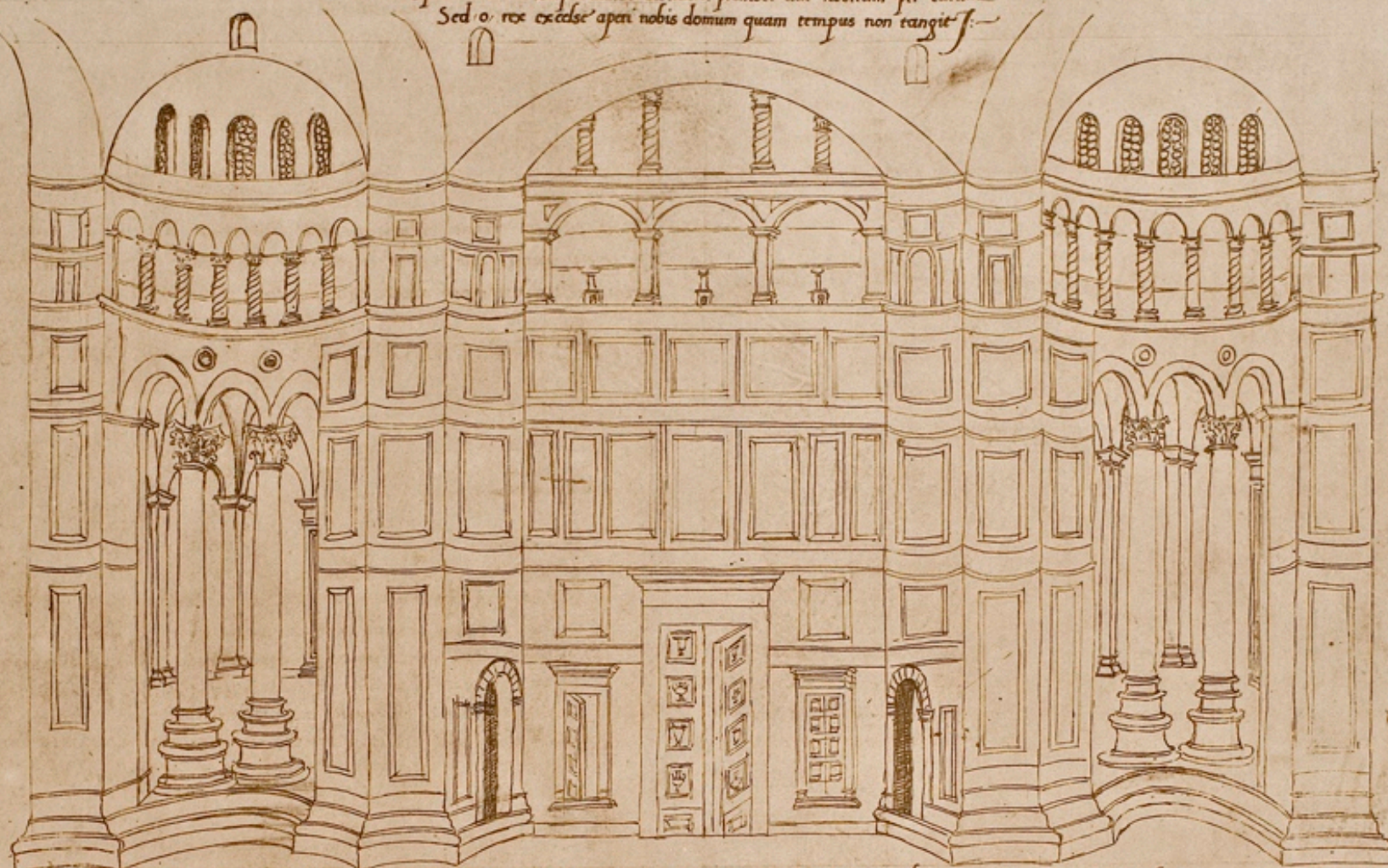


„ THE EMPEROR, THINKING NOT OF COST OF ANY KIND, PRESSED ON THE WORK, AND COLLECTED TOGETHER WORKMEN FROM EVERY LAND. ANTHEMIUS OF TRALLES, THE MOST SKILLED IN THE BUILDER'S ART, NOT ONLY OF HIS OWN BUT OF' ALL FORMER TIMES, CARRIED FORWARD THE KING'S ZEALOUS INTENTIONS, ORGANIZED THE LABOURS OF THE WORKMEN, AND PREPARED MODELS OF THE FUTURE CONSTRUCTION. ASSOCIATED WITH HIM WAS ANOTHER ARCHITECT [Μεχανοποιος] NAMED ISIDORUS, A MILESIAN BY BIRTH, A MAN OF INTELLIGENCE, AND WORTHY TO CARRY OUT THE PLANS OF THE EMPEROR JUSTINIAN.“

PROCOPIUS, DE AEDIFICIS 6TH CENTURY A.D.

Giuliano da Sangallo 15th century

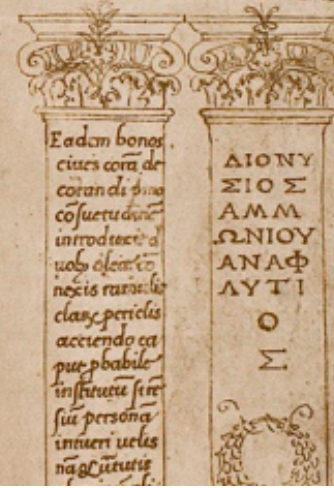
Opus imitabile: tempus minat: destruere: prohibet aut nostram per curam
Sed o rex ecclesie apert nobis domum quam tempus non tangit f.



ΚΥΜΟ ΔΟΒΜΙ
ΝΗΡΗΔ ΩΝ ΝΥΒΑ ΩΝ
ΠΙΣΤΑ ΤΗ ΘΕΑΣΙ

Alme sophie sapientie ut factu in bysantio a ius
Serpentinus ac marmoreis columnis diuersis
et ydoro mulesio nobilibus architectis principibus
Ab eterna templi et occidua parte figura a qua
amplurudo per lat. cubit. c. x. et
tiniano et sare templum maximum et c. m. porfiris
nobilis et conspicuum lapidum in signe antemio tramio
primu vestibulum atq ingressum habuisse uidetur cuius
alef. uo cubit. c. x. metra et.

CIVITAS ATHENA



Eadem bonos
cives cora de
corandi s. ma
cosuetudine
introdiret a
uobis electo
necis ramulis
clary periclis
acciendo ca
put p. babile
infractu fir
sua persona
innuere uelis
na q. iuris

ΔΙΟΝΥ
ΣΙΟΣ
ΑΜΜ
ΩΝΙΟΥ
ΑΝΑΦ
ΛΥΤΙ
Ο
Σ



„ NO ONE EVER BECAME WEARY OF THIS SPECTACLE, BUT THOSE WHO ARE IN THE CHURCH DELIGHT IN WHAT THEY SEE, AND, WHEN THEY LEAVE, MAGNIFY IT IN THEIR TALK. MOREOVER IT IS IMPOSSIBLE ACCURATELY TO DESCRIBE THE GOLD, AND SILVER, AND GEMS, PRESENTED BY THE EMPEROR JUSTINIAN, BUT BY THE DESCRIPTION OF ONE PART, I LEAVE THE REST TO BE INFERRED.“

PROCOPIUS, DE AEDIFICIS 6TH CENTURY A.D.

Wilhelm Salzenberg 1854



0 10 20 30 40 50 60 70 80 90 100 110 120 130 140 150 160 170 180 190 200 210 220 230 240 250 260 270 280 290 300 310 320 330 340 350 360 370 380 390 400 410 420 430 440 450 460 470 480 490 500 510 520 530 540 550 560 570 580 590 600 610 620 630 640 650 660 670 680 690 700 710 720 730 740 750 760 770 780 790 800 810 820 830 840 850 860 870 880 890 900 910 920 930 940 950 960 970 980 990 1000

LANGEN-SCHNITT NACH A. B.

„ ALL THESE PARTS SURPRISINGLY JOINED TO ONE ANOTHER
IN THE AIR, SUSPENDED ONE FROM ANOTHER, AND RESTING
ONLY ON THAT WHICH IS NEXT TO THEM, FORM THE WORK
INTO ONE ADMIRABLY HARMONIOUS WHOLE, WHICH
SPECTATORS DO NOT DWELL UPON FOR LONG IN THE MASS, AS
EACH INDIVIDUAL PART ATTRACTS THE EYE TO ITSELF.“

PROCOPIUS, DE AEDIFICIS 6TH CENTURY A.D.

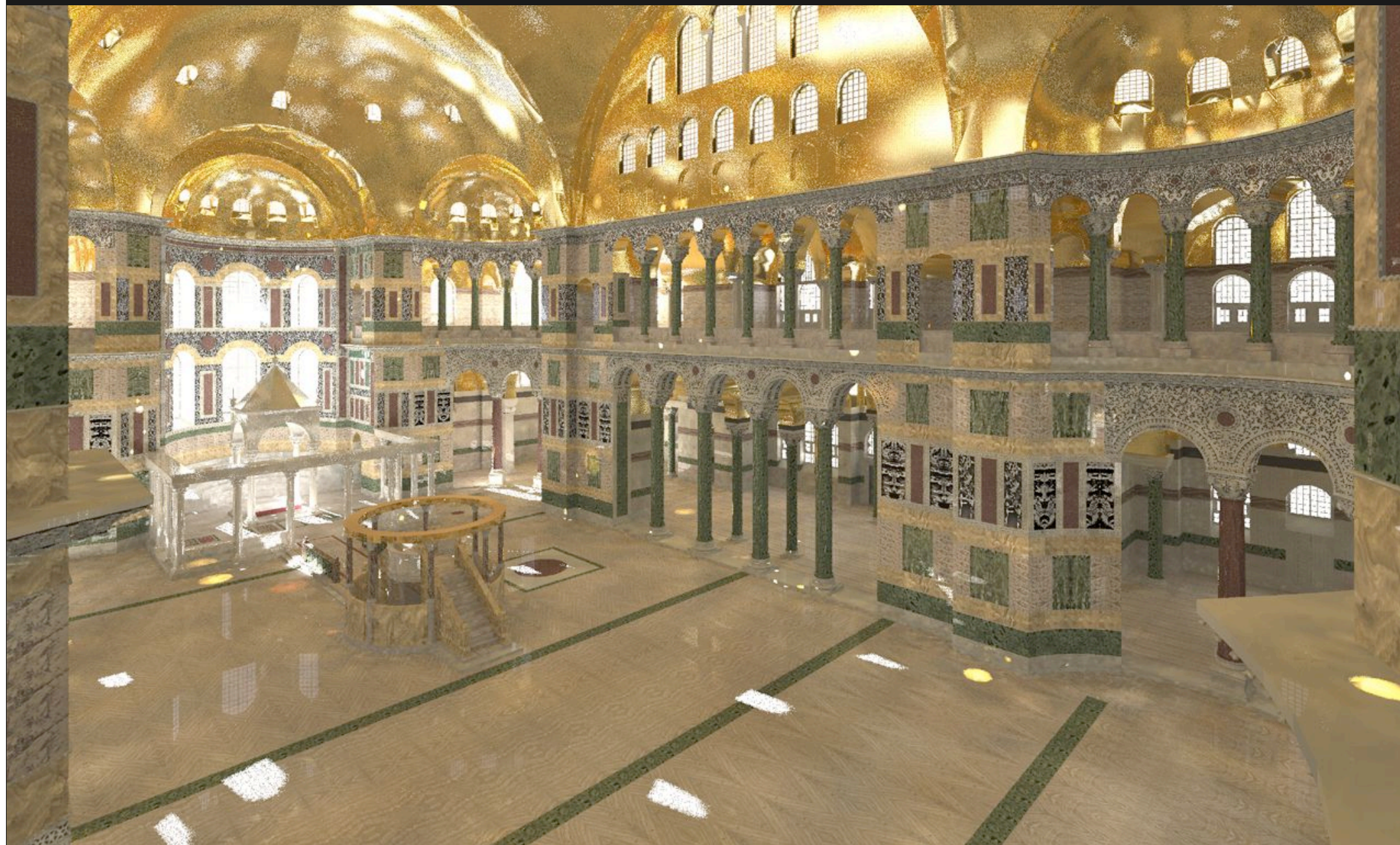
Henri Prost 1905



„ THE CHURCH IS SINGULARLY FULL OF LIGHT AND
SUNSHINE; YOU WOULD DECLARE THAT THE PLACE IS NOT
LIGHTED BY THE SUN FROM WITHOUT, BUT THAT THE RAYS
ARE PRODUCED WITHIN ITSELF, SUCH AN ABUNDANCE OF
LIGHT IS POURED INTO THIS CHURCH....“

PROCOPIUS, DE AEDIFICIS 6TH CENTURY A.D.

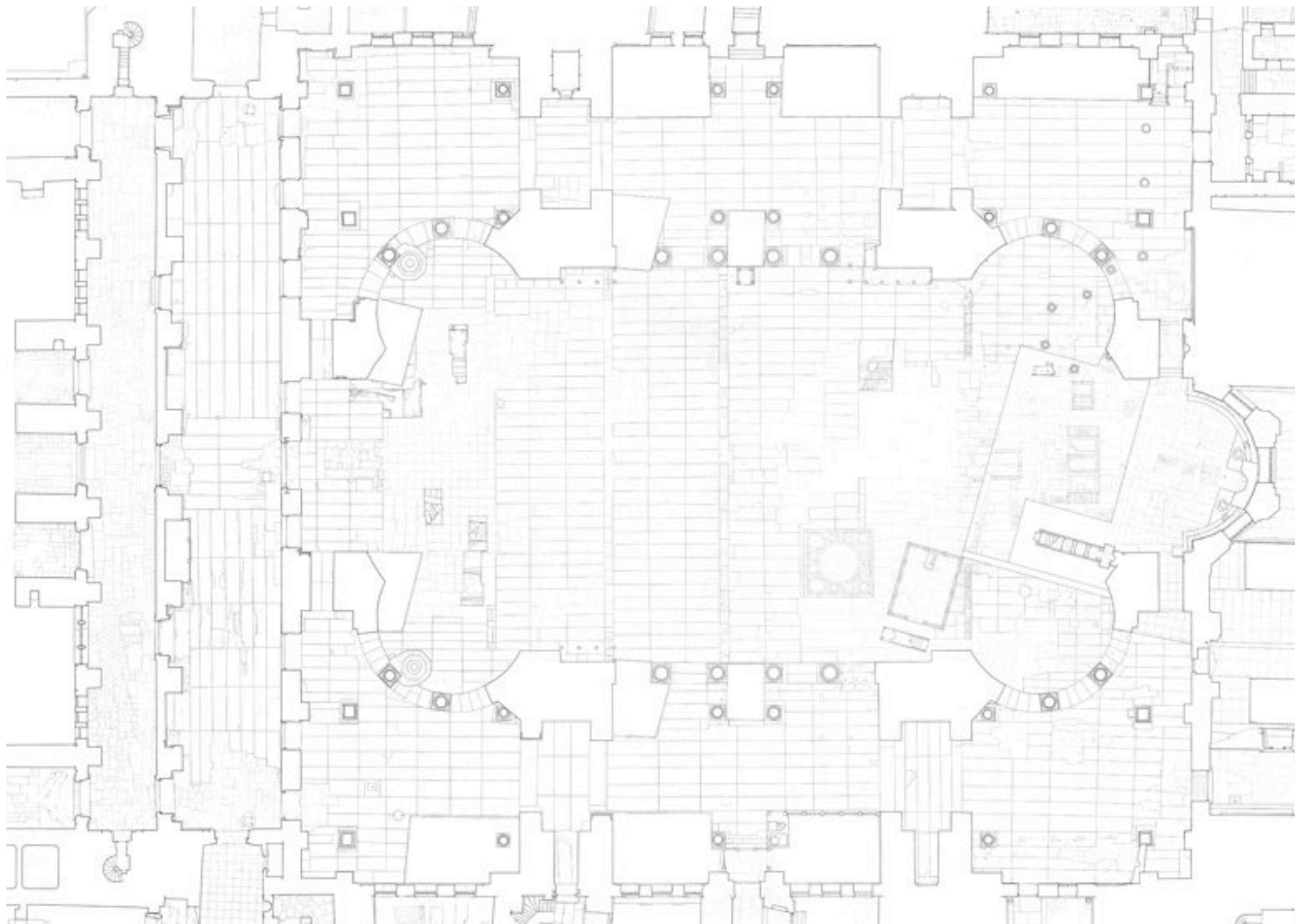
TU Darmstadt 2008



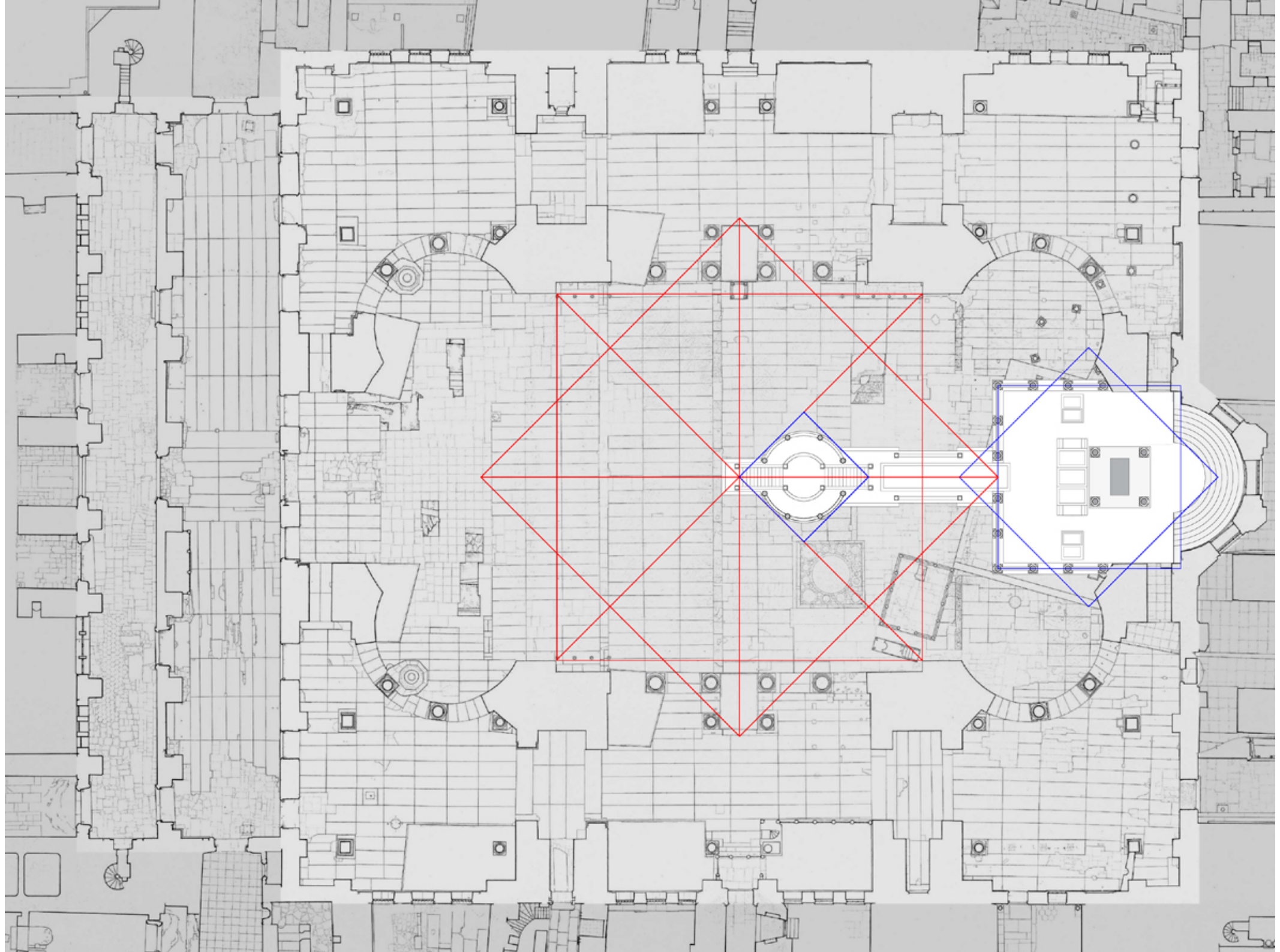
„[THE CHURCH] IS DISTINGUISHED BY INDESCRIBABLE BEAUTY, EXCELLING BOTH IN ITS SIZE, AND IN THE HARMONY OF ITS MEASURES, HAVING NO PART EXCESSIVE AND NONE DEFICIENT; BEING MORE MAGNIFICENT THAN ORDINARY BUILDINGS, AND MUCH MORE ELEGANT THAN THOSE WHICH ARE NOT OF SO JUST A PROPORTION.“

PROCOPIUS, DE AEDIFICIS 6TH CENTURY A.D.

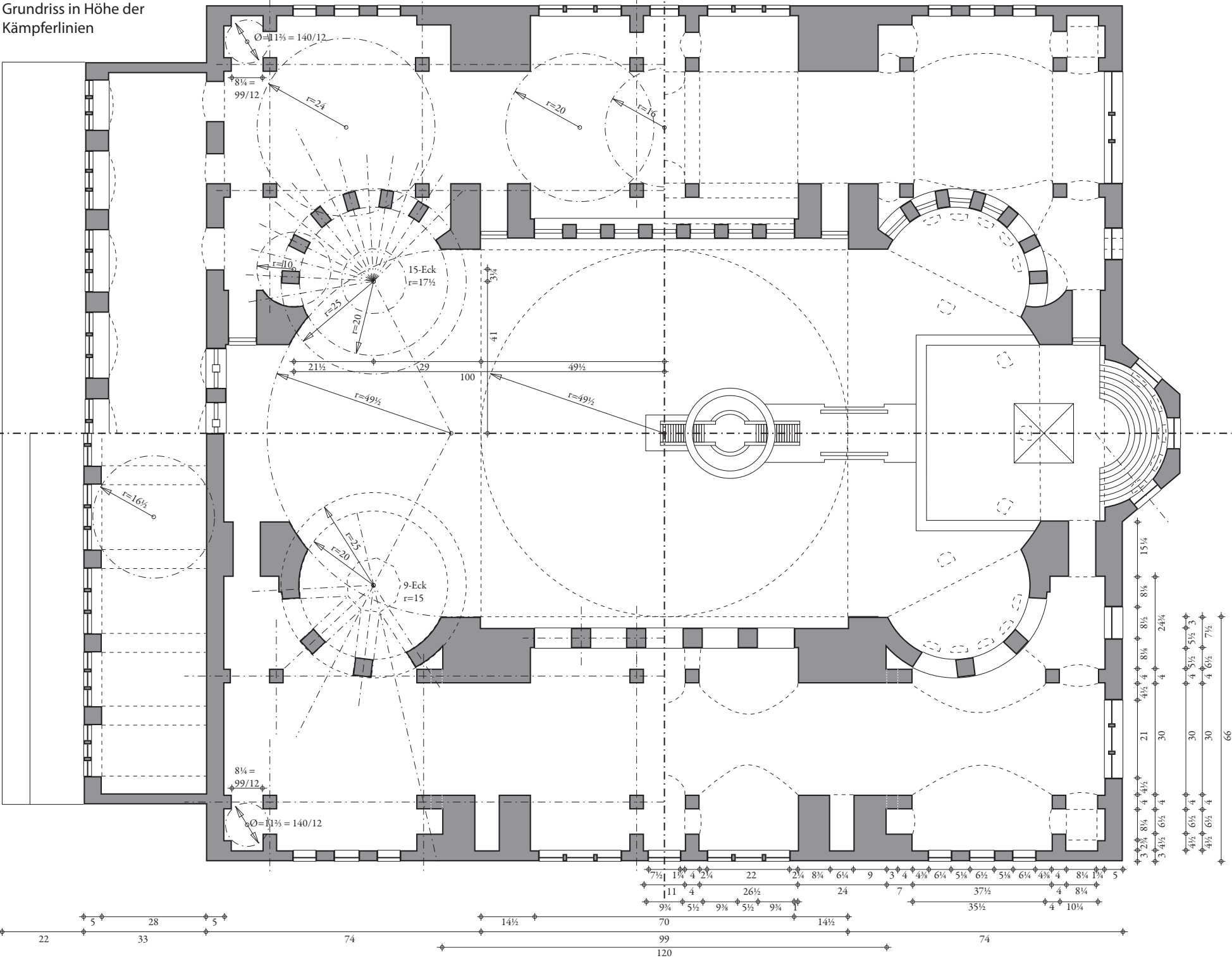
Robert Van Nice 1937-1965

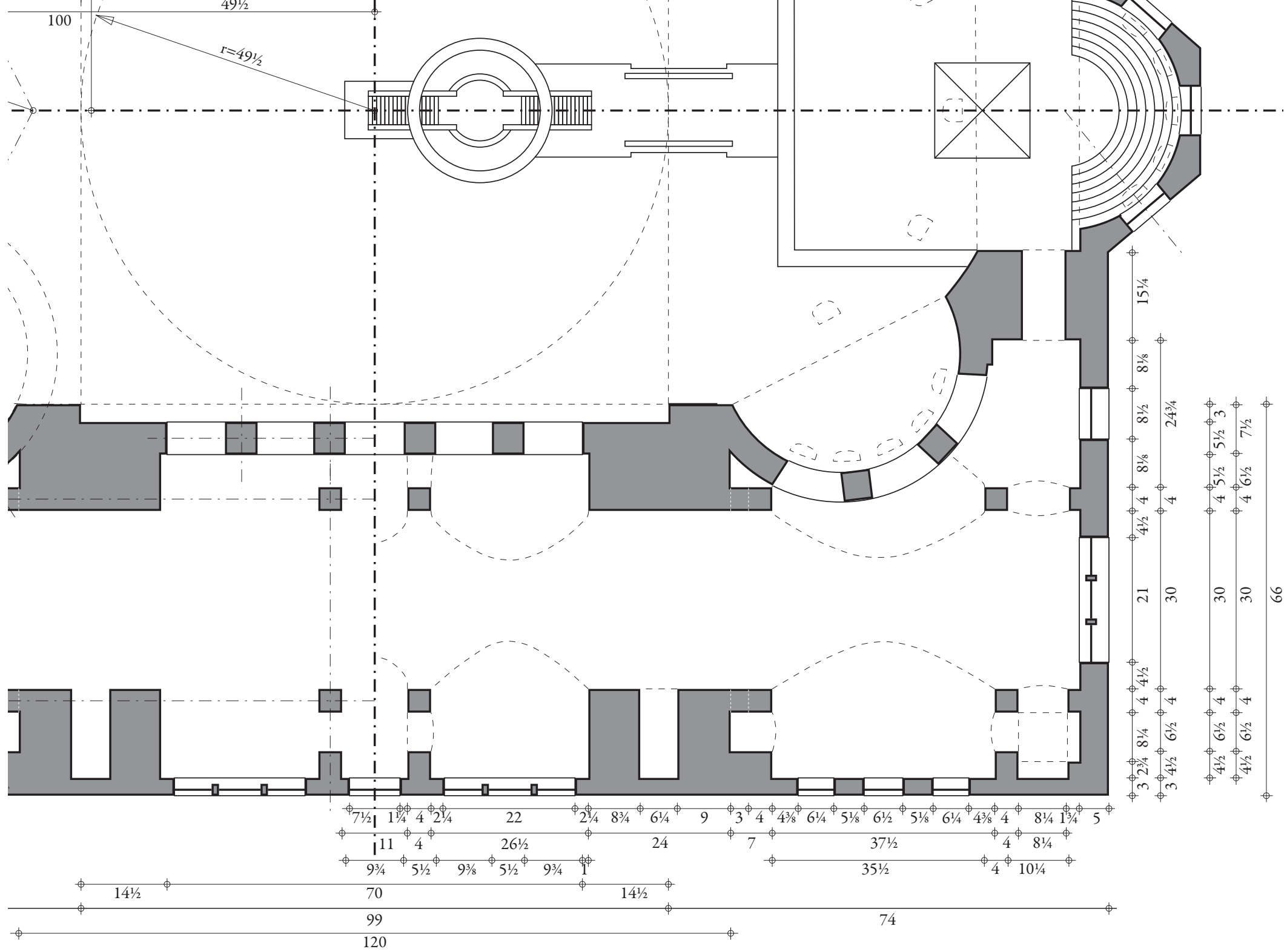


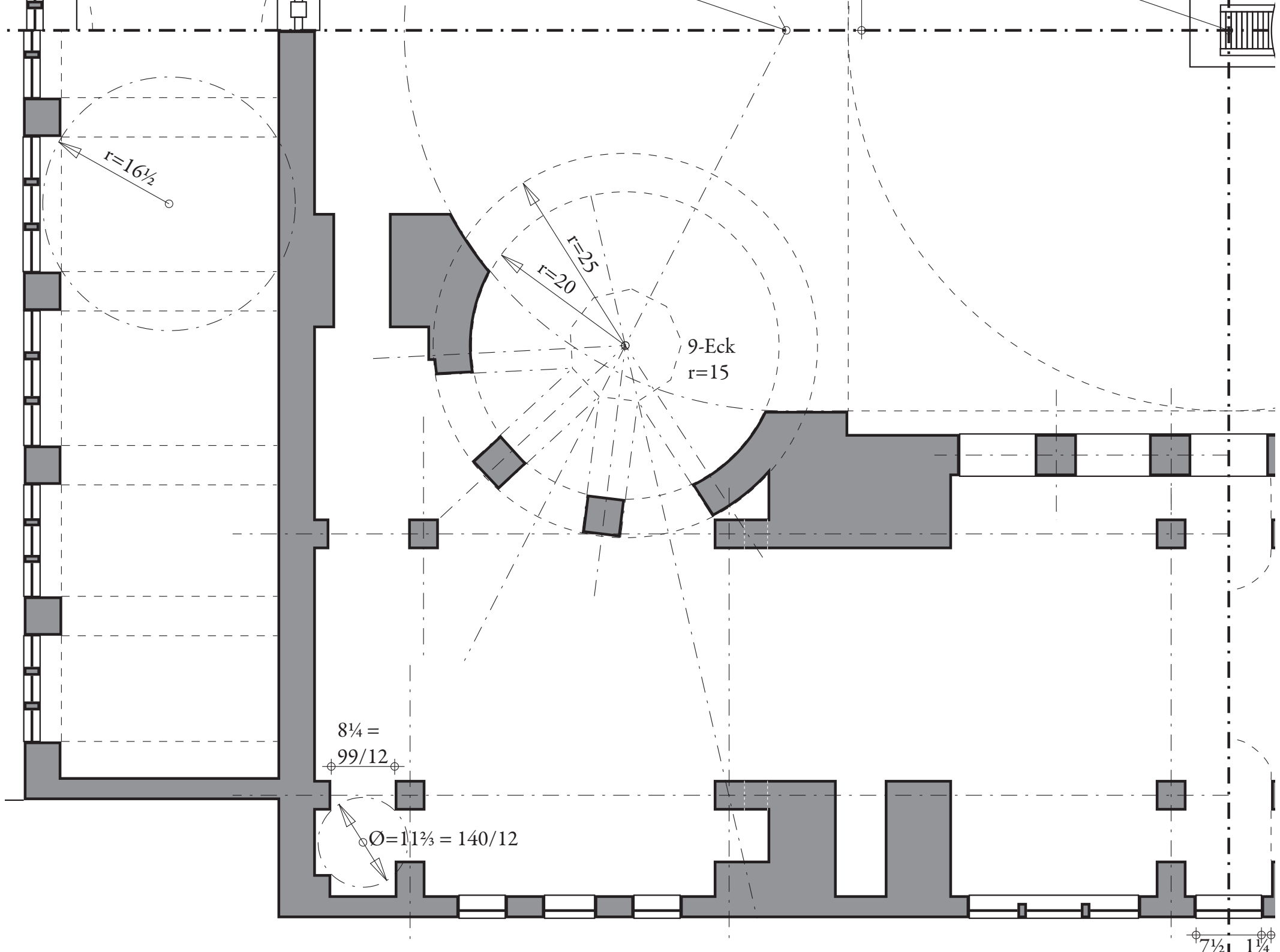
Helge Svenshon 2006



Grundriss in Höhe der Kämpferlinien





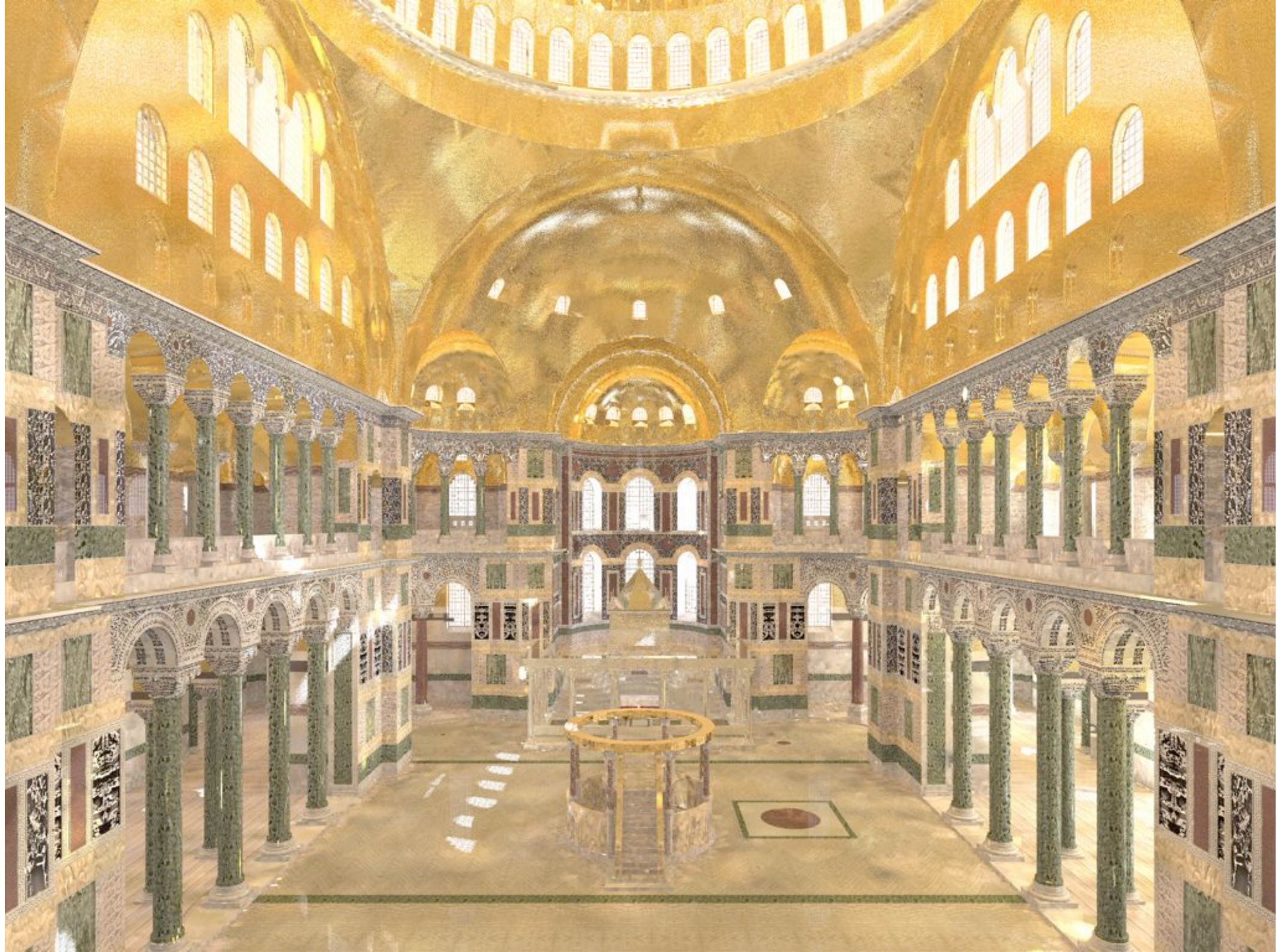




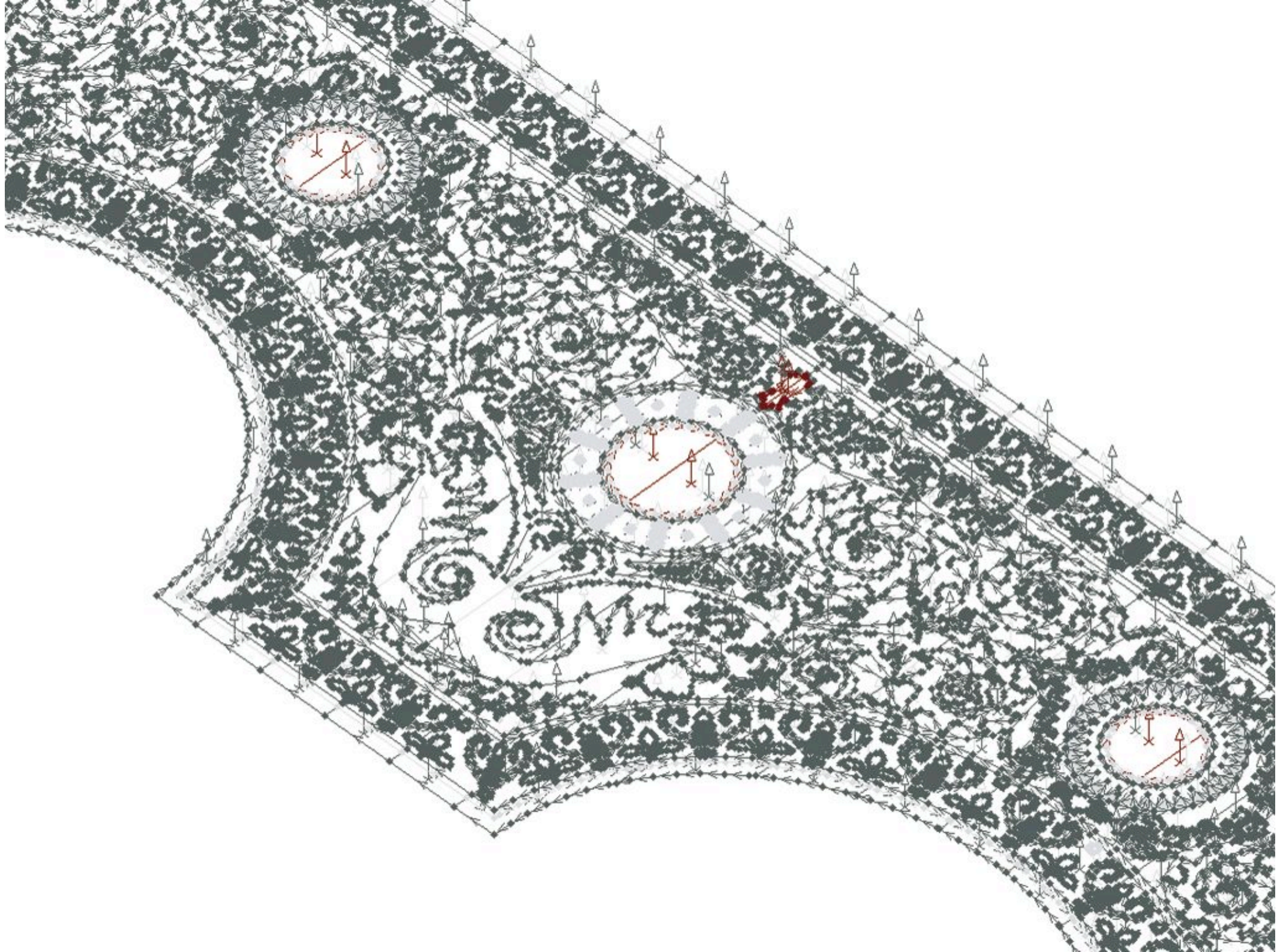




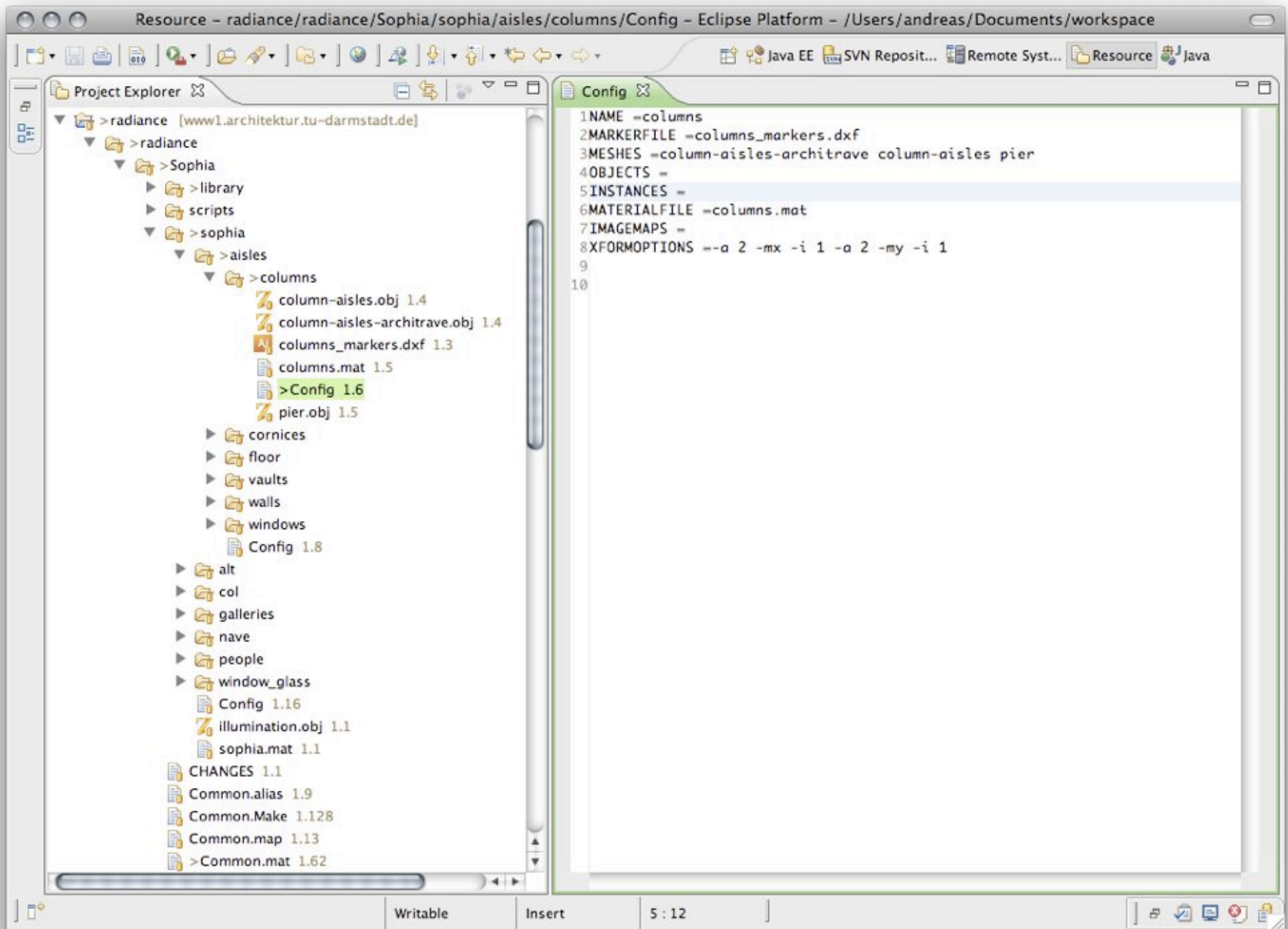








theophanu.wiki.sourceforge.net

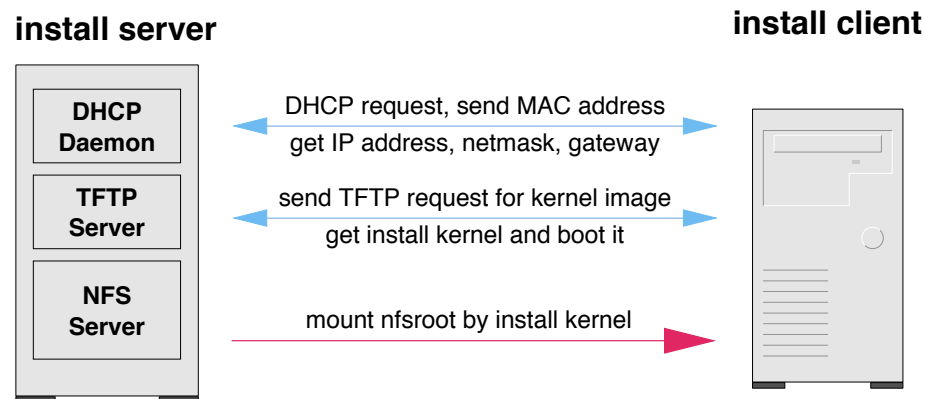


FAI

Plan your installation,
and FAI installs your plan.

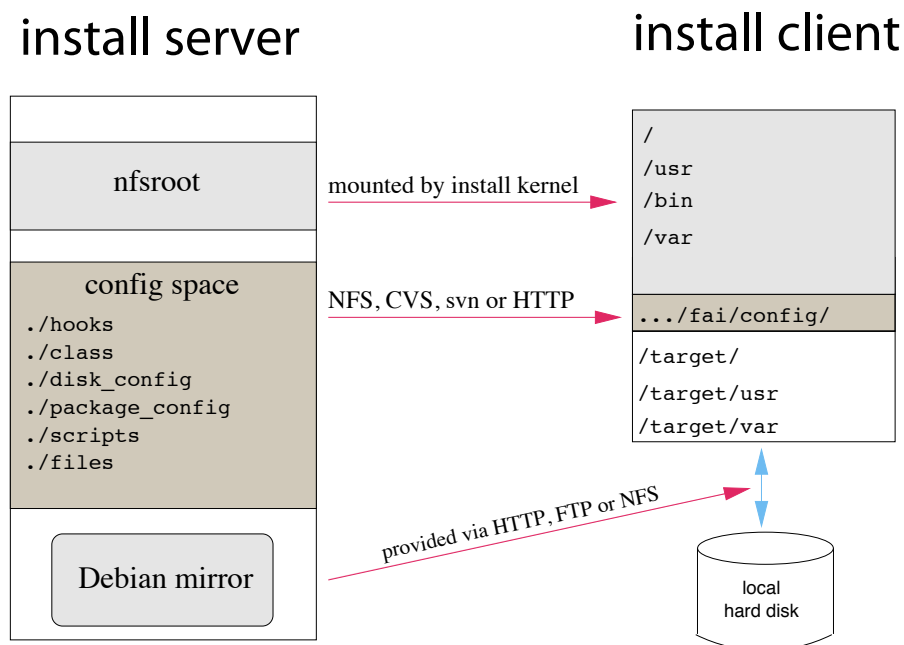


1 - Boot via network card (PXE), CD-ROM or floppy



Now a complete Linux OS is running without using local hard disks

2 - Get configuration data



3 - Run installation













Thank you.