

Overview

- Why?
- How/What?
 - About Cmake
 - Building with Cmake
 - Testing with CTest/Cdash
 - Radiance dashboard
 - Packaging with Cpack
- What('s in it for me?)
 - Nightly Radiance builds/installers
 - New Qt-based rvu (runs on Windows!)

Why?

Grew out of a need for a large cross platform software project (OpenStudio)

Cross platform tools don't help much if underlying simulation engines are unavailable/out of date

The Radiance Cmake/Dashboard project attempts to keep Windows binaries semi-automatically up to date

Cmake offers developers some nifty functionality as well, but main goal is to offer Windows users easier entry to using Radiance. That's it.

How?

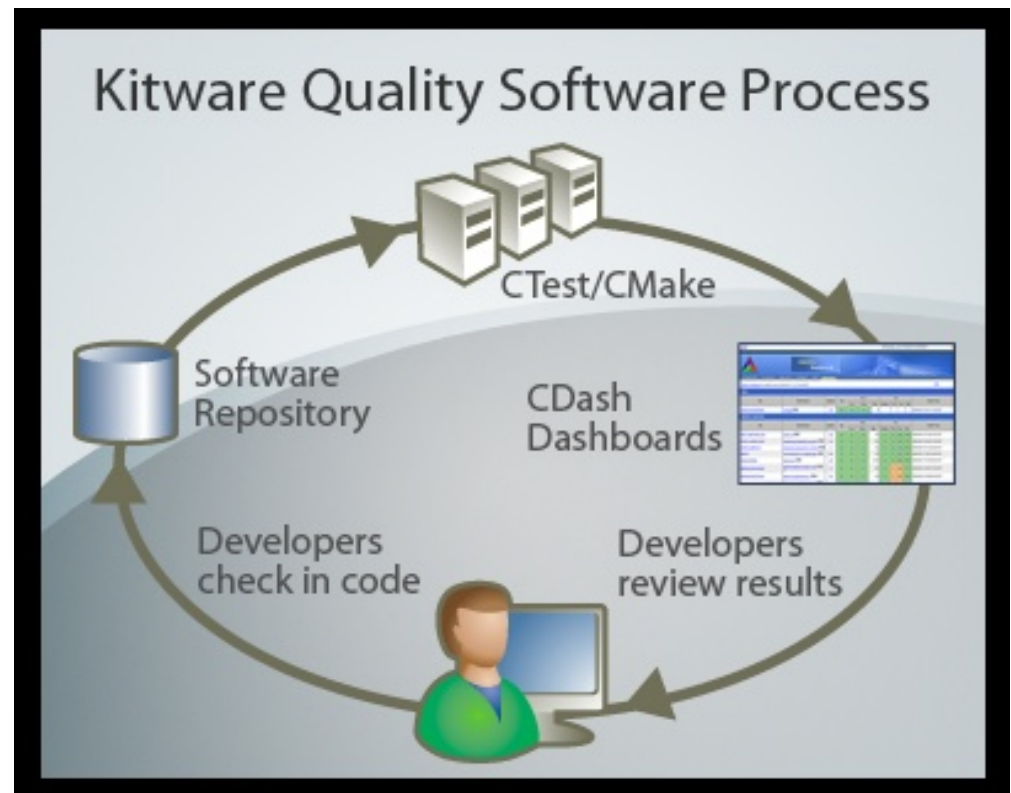
Cmake

Family of Software Development Tools

- Build – CMake
- Test – CTest/CDash
- Package – CPack

Open-Source

Cross platform



CMake – Cross Platform Build System

Where to get help

- Mastering CMake Book
- Web Page: www.cmake.org
- <http://www.cmake.org/Wiki/CMake>
- mailing list: cmake@cmake.org



CMake Documentation

Mastering CMake Book

Web Page: www.cmake.org

<http://www.cmake.org/Wiki/CMake>

mailing list: cmake@cmake.org

- Full reference documentation
- <http://www.cmake.org/cmake/help/documentation.htm>

Ships HTML, man, and command line help

- Tutorial included and tested in source tree (Tests/Tutorial/)
- configured files
- optional build components
- install rules, test properties
- system introspection
- CPack
- CTest with CDash



CMake Features

One simple language for all platforms

- Windows, Mac, Linux, UNIX variants
- HPC/Embedded platforms via cross-compilation (ParaView/python)

Generates native build systems

- Makefiles (GNU, NMake, Borland, etc.)
- Open IDEs (e.g. KDevelop, Eclipse)
- MS Visual Studio 6,7,8,9 IDE
- Apple Xcode

Out-of-source build trees leave source clean

Interactive configuration via GUI

Multiple configurations (Debug, Release, etc.)

Installing CMake

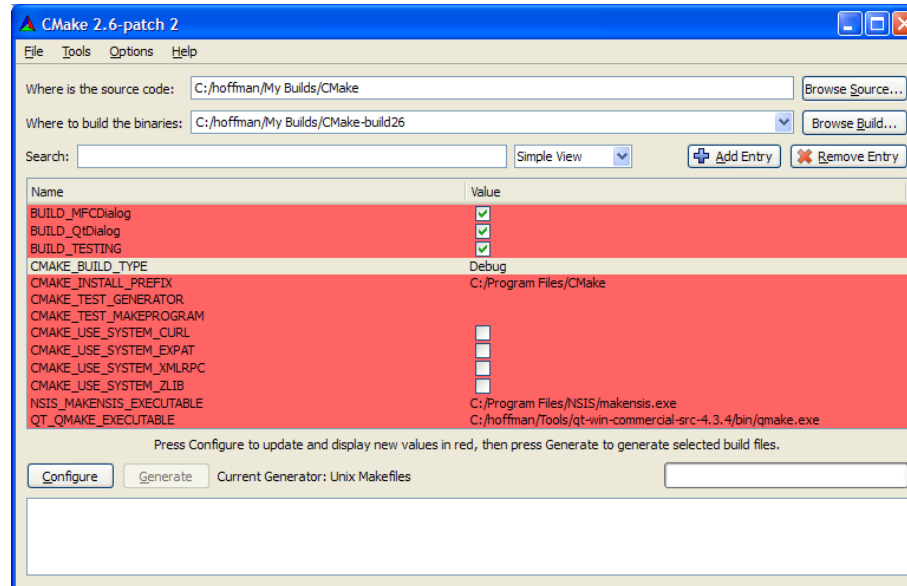
Easy to Get CMake

- <http://www.cmake.org/cmake/resources/software.html>
- Many Linux distributions and Cygwin include CMake packages
 - apt-get install cmake

Installing CMake from www.cmake.org

- Windows Binary installers
- Linux Binaries – can be installed anywhere, (don't need root)
- Mac
- Other UNIX on download page
- Source can bootstrap on any Unix platform

Cache Editors: cmake-gui (qt), ccmake (curses)



```
Page 1 of 1
BUILD_DOXYGEN OFF
BUILD_TESTING ON
CMAKE_CONFIGURE_INSTALL_PREFIX /usr/local
CMAKE_CXX_FLAGS
CMAKE_C_FLAGS
CMAKE_INSTALL_PREFIX /usr/local
CURSES_EXTRA_LIBRARY NOTFOUND
CURSES_INCLUDE_PATH /usr/include
CURSES_LIBRARY /usr/lib/libcurses.a
DART_ROOT /cygdrive/c/hoffman/Dart
EXECUTABLE_OUTPUT_PATH /cygdrive/c/hoffman/CMake-gcc/
FORM_LIBRARY /usr/lib/libform.a
LIBRARY_OUTPUT_PATH

BUILD_DOXYGEN: Build source documentation using doxygen
Press [enter] to edit option CMake Version 1.3 - development
Press [c] to configure Press [g] to generate and exit
Press [h] for help Press [q] to quit without generating
Press [t] to toggle advanced mode (Currently Off)
```

Testing with CMake, CTest and CDash

Testing command in CMake

- `add_test (testname exename arg1 arg2 arg3 ...)`
- Executable is expected to return 0 for passed
- Can set other test passing conditions based on output matching.

`ctest` – an executable that is distributed with `cmake` that can run tests in a project.

- Used for continuous integration testing
- Client for CDash
- Can be use for both CMake based projects and other build systems

CDash Dashboard www.cdash.org

CDash - CMake - Mozilla Firefox

http://public.kitware.com/CDash/index.php?project=CMake

Kitware WIKI Dell CDash Dash1old CDash Public Road Runner Web Mail Kitware Calendar Kitware Inc. public.kitware.com: D... CNN.com - Breaking ... CMake Cross Platfor...

Google ugly duckling Search AutoLink AutoFill Send to ugly duckling

Start Ora... TravelSer... CDash... can anyon... Communic... PackageM... Re: postfil... LOCAPHO... http:...dges Qt 4.3: Q... Hotel Nov... Google Maps

CMAKE Dashboard

DASHBOARD CALENDAR PREVIOUS CURRENT NEXT PROJECT

[Nightly Changes](#) as of 2008-02-20 21:00:00 EST

Style [Nightly Expected] [Nightly 2.4 Release] [Nightly] [Continuous] [Experimental] [Coverage] [Dynamic Analysis]

Site	Build Name	Update	Cfg	Build			Test					Build Date
				Error	Warn	Min	NotRun	Fail	Pass	NA	Min	
insight.journal.kitware	KWStyle	7	0	0	0	0	0					2008-02-21 02:28:33 EST

Nightly Expected [Style] [Nightly 2.4 Release] [Nightly] [Continuous] [Experimental] [Coverage] [Dynamic Analysis]

Site	Build Name	Update	Cfg	Build			Test					Build Date
				Error	Warn	Min	NotRun	Fail	Pass	NA	Min	
Titanium.IMTS.us	Linux64-Rocks-ICC-Rel	107	0	0	0	10.7	0	0	93	0	8.1	2008-02-21 10:23:00 EST
krondor.kitware	Darwin-c++	0	0	0	0	59.1	0	1	95	0	55.2	2008-02-21 09:56:00 EST
dash8.kitware	Linux64-g++332	0	0	0	0	6.3	0	0	95	0	18.3	2008-02-21 08:02:00 EST
RogueResearch3	Mac10.5-CMake-Xcode-dbg-ppc64	1	0	0	0	13.1	0	0	90	0	23.4	2008-02-21 05:15:00 EST
RogueResearch3	Mac10.5-CMake-Xcode-dbg-ppc	1	0	0	0	13	0	0	90	0	23.9	2008-02-21 04:28:00 EST

Find: qfilein Next Previous Highlight all Match case

Done

Radiance Dashboard


<http://www.cdash.org/CDash/index.php?project=radiance>

CDash - radiance

http://www.cdash.org/CDash/index.php?project=radiance

OpenStudio - S... theSOURCE Hom... NREL VPN OpenStudio - Pi... Accounts Flickr! Facebook rumblestrip > Lo... Bookmarks

Login | All Dashboards Thursday, August 25 2011 08:35:44 EDT




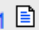



RADIANCE Dashboard

DASHBOARD CALENDAR PREVIOUS CURRENT PROJECT

No file changed as of Thursday, August 25 2011 01:00:00 EDT [Help](#)

[\[Show Filters\]](#)

Nightly

Site	Build Name	Update		Configure			Build				Test				Build Time
		Files	Min	Error	Warn	Min	Error	Warn	Min	NotRun	Fail	Pass	Min		
elysium.kitware	Linux gcc-4.3.3 	0	0.6	0	0	0	0	13	0.5	0	0	8	0.2	2011-08-25T07:30:43 EDT	
dashmacmini2.kitware	Mac Tiger gcc-4.0.1 	0	0.2	0	0	0.2	0	90	1.2	0	0	8	0.3	2011-08-25T04:34:31 EDT	
dash2win64.kitware	Win64 NMake   	0	0.2	0	0	0.1	0	152	5.5	0	1	7	0.5	2011-08-25T03:37:11 EDT	
Totals	3 Builds	0	1	0	0	0.3	0	255	7.2	0	1	23	1		

CVS HEAD

Site	Build Name	Update	Configure	Build	Test	Build Time
------	------------	--------	-----------	-------	------	------------

zotero

CDash Email Notification

A submission to CDash for the project CMake has failing tests.
You have been identified as one of the authors who have checked
in changes that are part of this submission or you are listed in the default contact list.

Details on the submission can be found at <http://www.cdash.org/CDash/buildSummary.php?buildid=322849>

Project: CMake
Site: destiny.kitware
Build Name: HP-UX-aCC
Build Time: 2009-04-29T14:28:00 EDT
Type: Continuous
Tests failing: 85

Tests failing (first 5)

SystemInformationNew (<http://www.cdash.org/CDash/testDetails.php?test=21959894&build=322849>)
CommandLineTest (<http://www.cdash.org/CDash/testDetails.php?test=21959897&build=322849>)
FindPackageTest (<http://www.cdash.org/CDash/testDetails.php?test=21959898&build=322849>)
FindModulesExecuteAll (<http://www.cdash.org/CDash/testDetails.php?test=21959899&build=322849>)
StringFileTest (<http://www.cdash.org/CDash/testDetails.php?test=21959900&build=322849>)

-CDash on www.cdash.org

CDash Testing

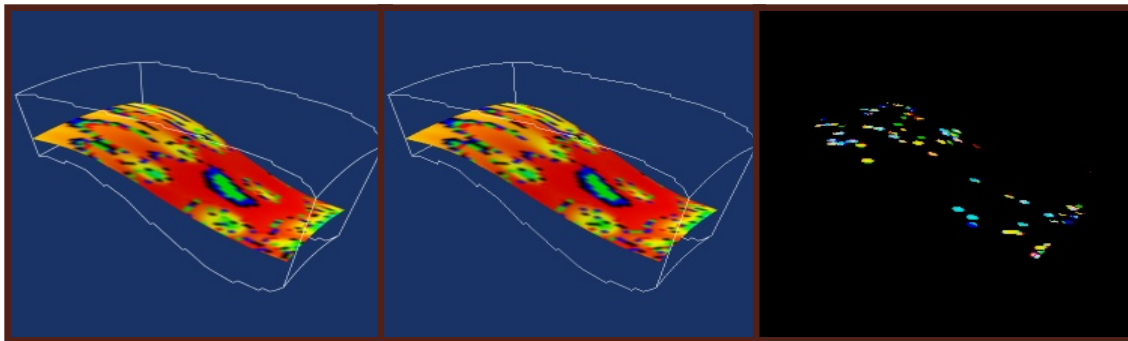
Purify / valgrind

Coverage (gcov, bullseye)

Configuration coverage

- Make sure different OS's, Libraries and options are covered

Image difference testing

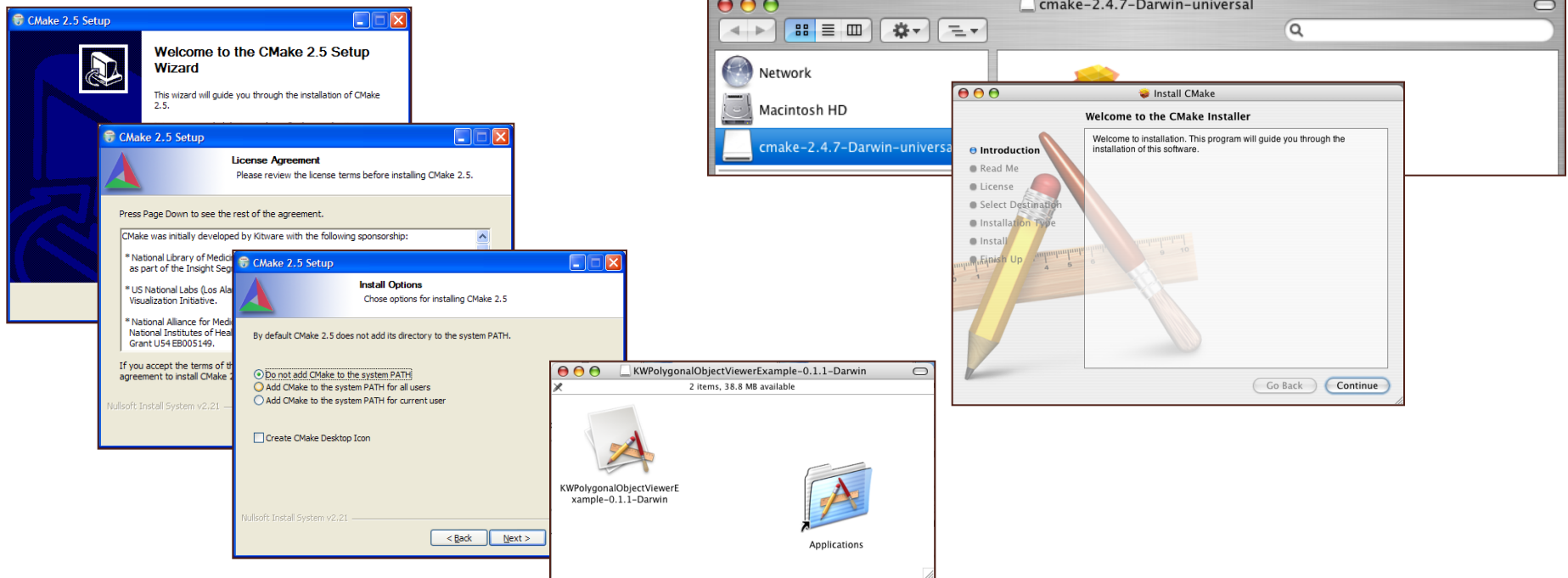


CPack

CPack is bundled with CMake

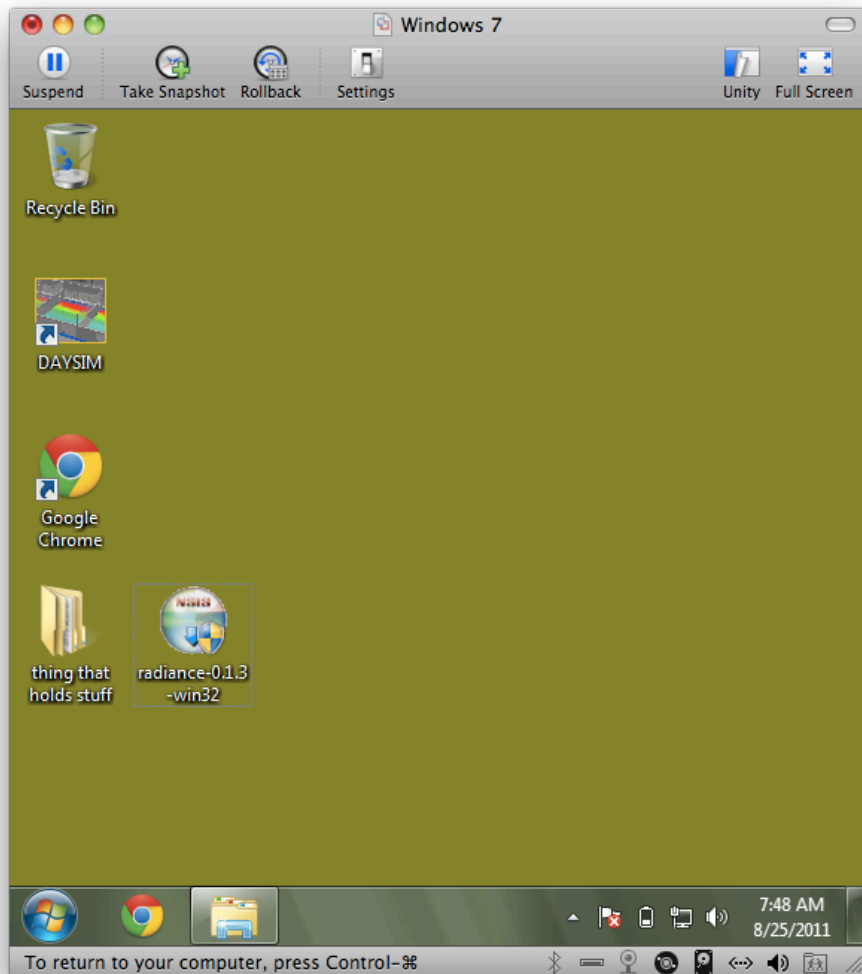
Creates professional platform specific installers

- TGZ and Self extract TGZ (STGZ), NullSoft Scriptable Install System (NSIS), OSX PackageMaker, RPM, Deb



After all that...

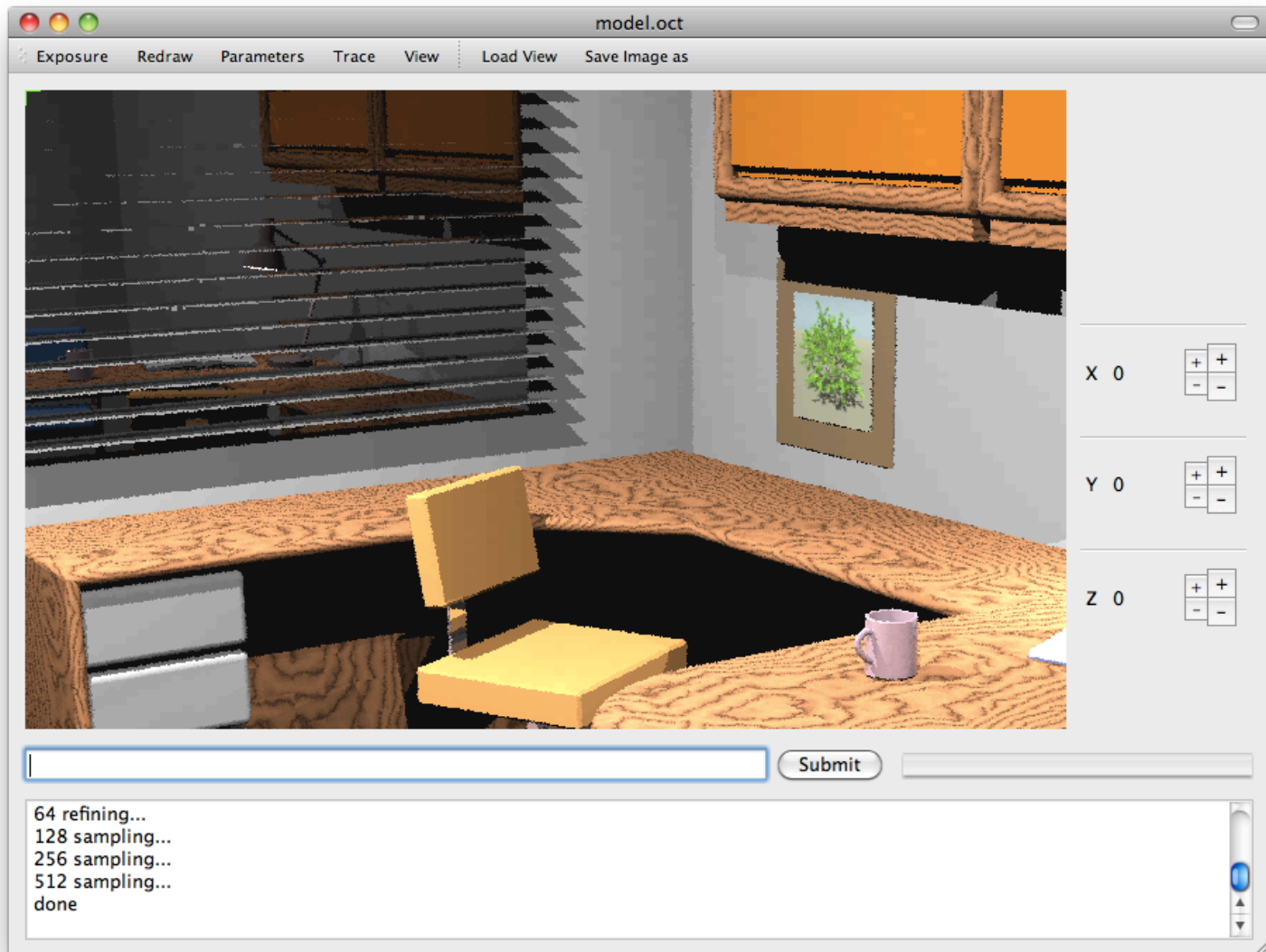
Nightly Builds & Installers!



And...

Cross platform rvu!

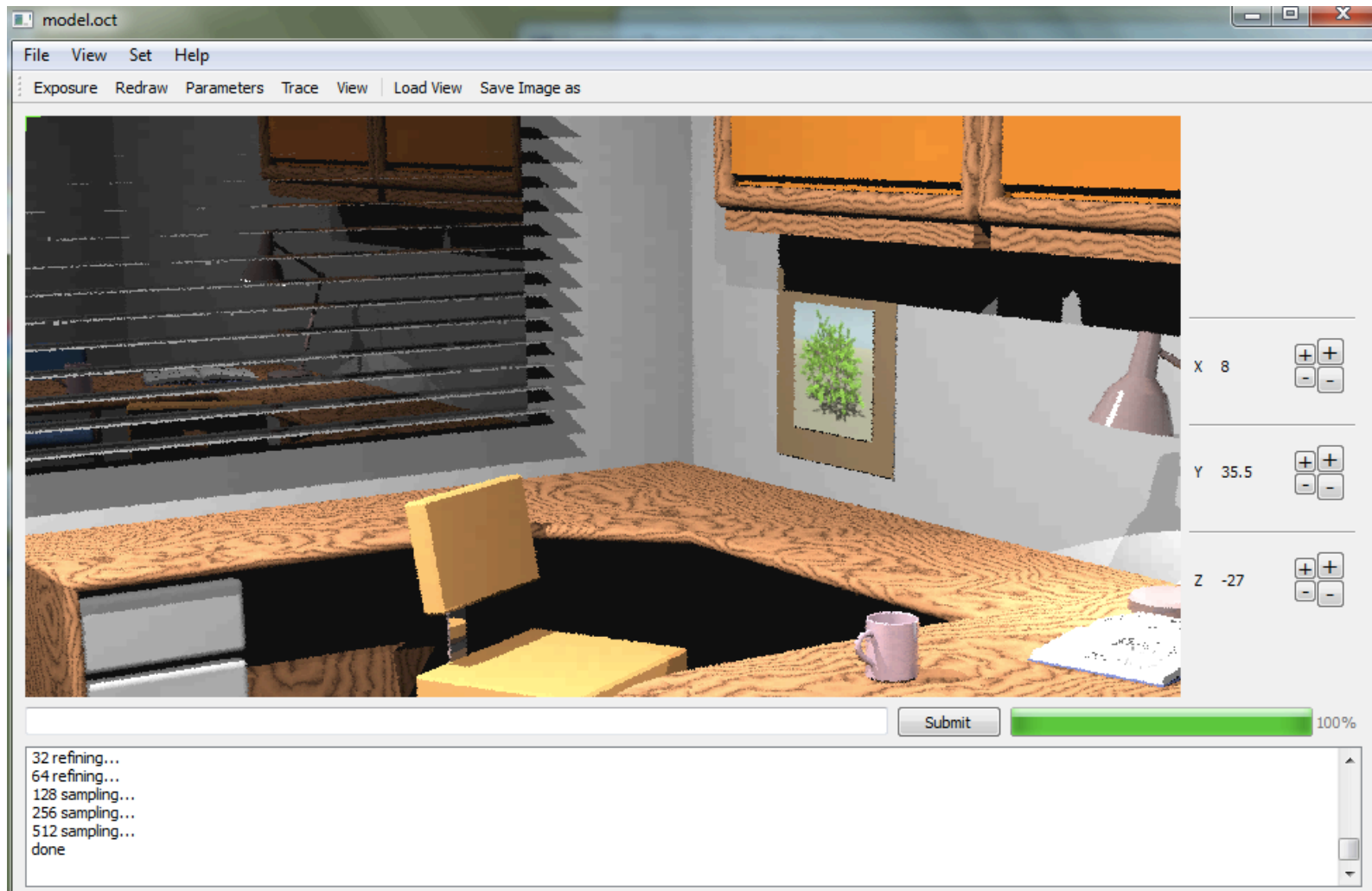
Uses Qt, new -o option (still defaults to x11 on Mac & Linux, but option avail.



And...

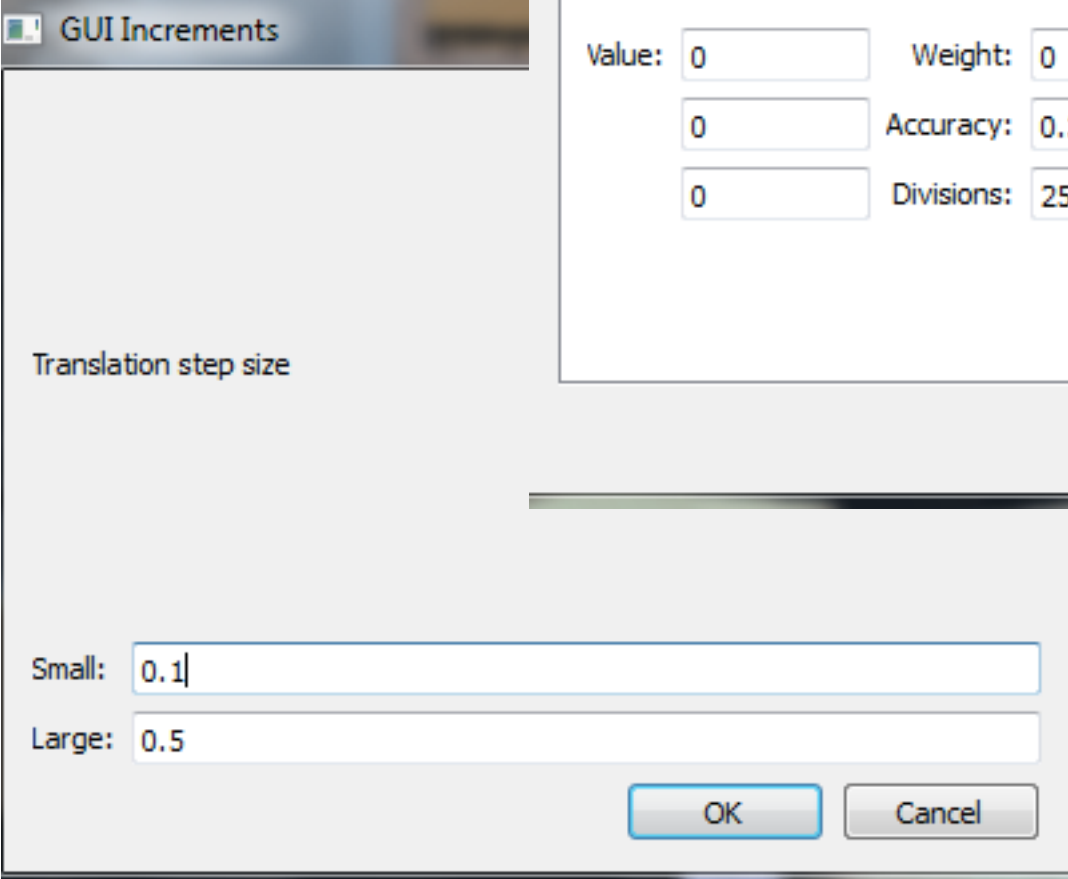
Cross platform rvu!

Defaults to Qt version on Windows (tested on Windows7 and XP)



And...

GUler rvu!

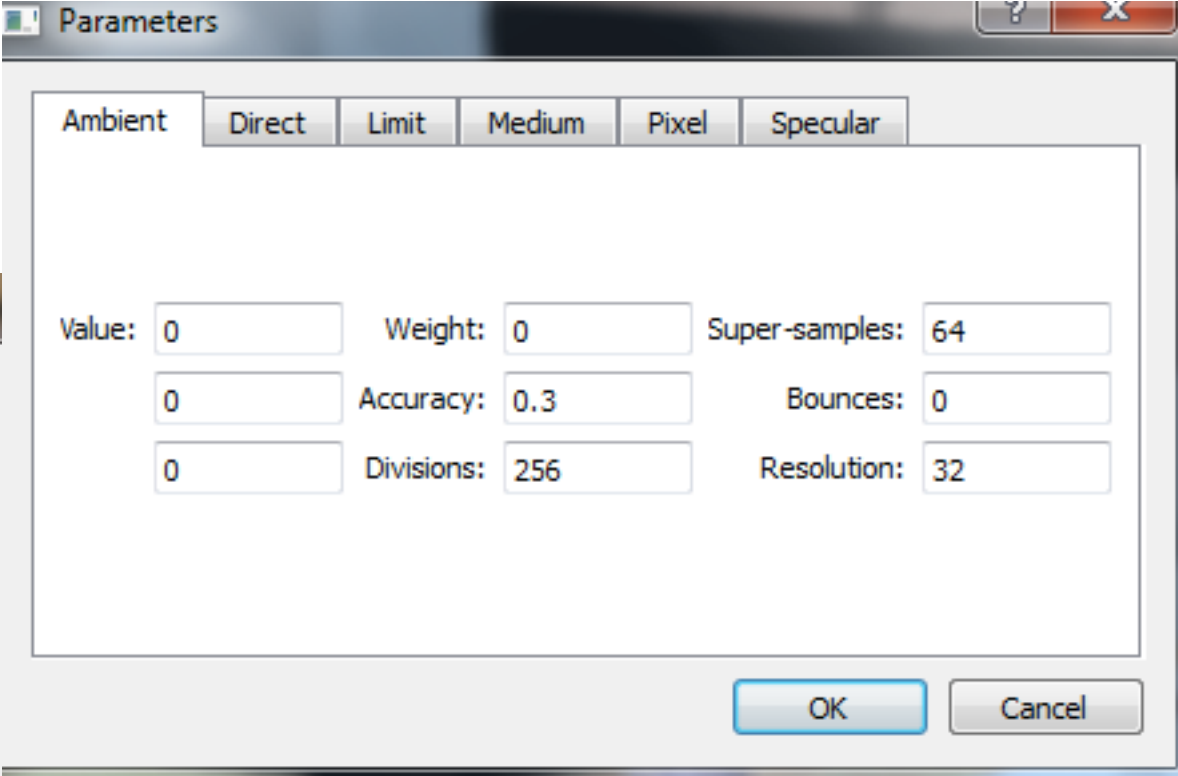


GUI Increments

Translation step size

Small:

Large:



Parameters

Ambient

Value:	<input type="text" value="0"/>	Weight:	<input type="text" value="0"/>	Super-samples:	<input type="text" value="64"/>
	<input type="text" value="0"/>	Accuracy:	<input type="text" value="0.3"/>	Bounces:	<input type="text" value="0"/>
	<input type="text" value="0"/>	Divisions:	<input type="text" value="256"/>	Resolution:	<input type="text" value="32"/>

Discuss

- Dependencies
- Who will use all of this (versus just builds)?
- How best to integrate (working lunch topic?)